



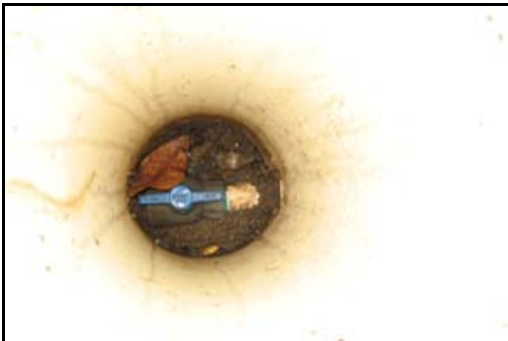
Do you know how to shut off the water to your house?

As the weather turns colder, it's good to know how to turn the water to your house off because there is an increased chance of water pipes freezing or bursting. If a pipe bursts in your home – *the kitchen, bath, basement, or crawl space* – knowing the location of the water shut-off valve can protect your property and save water.

The location of the shut-off valve varies from home to home. Common locations include the basement, the garage or crawl space, and even outside your home near the foundation. Some homes do not have a water shut-off valve.

If you cannot locate your water shut-off valve or if it appears to be stuck we recommend checking with a plumber.

Types of Shut Off Valves - Your water shut off valve may take many different forms. Below are a few of the most common types of shutoff valves:



Comprised of more than 20 member organizations, the Consortium serves Clackamas, Multnomah and Washington Counties and is committed to developing and implementing water conservation programs that educate the public about water-related issues.

www.conserveh2o.org
Water. Save a Little. Help a Lot.



Comprised of more than 20 member organizations, the Consortium serves Clackamas, Multnomah and Washington Counties and is committed to developing and implementing water conservation programs that educate the public about water-related issues.

www.conserveh2o.org

Water. Save a Little. Help a Lot.